

**State of Wyoming Corner Record**

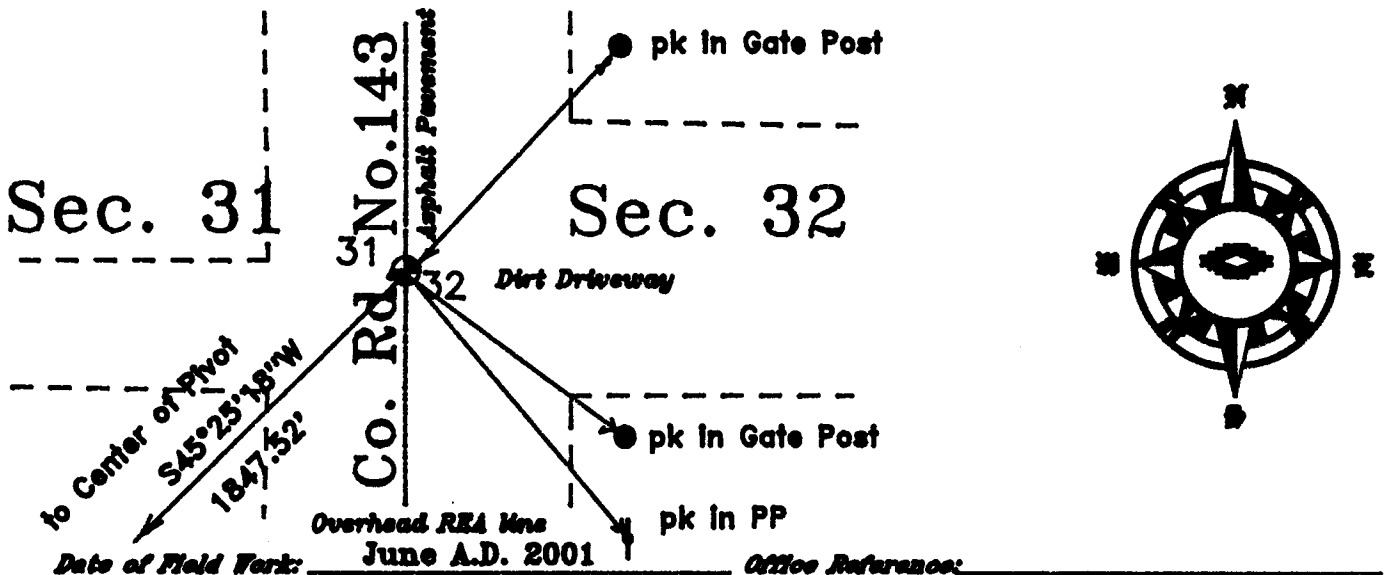
(In compliance with the CORNER PERPETUATION AND FILING ACT, Wyoming Statutes, 1977,  
Section 36-11-101, et seq., and the Rules and Regulations of the Board of Registration for Professional  
Engineers and Professional Land Surveyors)

The reverse side of this form may be used if more space is needed.

*The Record of the original survey and the citation of the source of the historical information (if the corner is lost or obliterated). The description of the corner monumentation evidence as found and/or the monument and its accessories as established to perpetuate the location of this corner. A sketch of the relative location of this Monument, accessories, and reference points with the course and distance to adjacent corner (s) (if determined during this Survey). The Method and Rationale used for the reestablishment of lost and obliterated corner.*

Original Corner set by Alfred M. Rodgers - June 19th ~ June 24th 1871 under contract No. 15 joint contract with Edwin James.  
North between Sections 31 & 32 - Va. 15°27'E - 40.00 ch. set a red Sandstone 16"X8"X5" for 1/4 Sec. Corner; thence, 57.00 Emigrant Road bears NE to SW; thence, 75.10 chains Branch of same; thence, 80.00 chains set a Red Sandstone 20"X8"X4" for corner to Sections 29,30,31 & 32.  
Approved by Surveyor General in Wyoming Territory on July 31st 1871 by Sialas Reed.

Found Section corner common to Section 31,32 of T.15N. R.63W. and Section 5 and 6 of T.14N. R.63W. being a mon. in the C/L of Co. Rd. 143 & 215, and a mon. in the C/L of Co. Rd. 143 lying N00°16'20"W a distance of 5270.44 feet (79.855 chains).  
Set on Section corner mon. for Section 5,6 31 & 32 and measure 2635.22 feet (39.928 chains)  
Set 3" Aluminum Cap and 5/8" X 34" rebar as shown hereon.



**Cross Index Diagram**

**T.15 N. R.63 W. 6th P.M.**

	1	2	3	4	5	6	7	8	9	10	11	12	13	14	15	16	17	18	19	20	21	22	23	24	25
A																									
B																									
C																									
D																									
E																									
F																									
G																									
H																									
I																									
J																									
K																									
L																									
M																									
N																									
O																									
P																									
Q																									
R																									
S																									
T																									
U																									
V																									
W																									
X																									
Y																									
Z																									

*Firm/Agency, Address*  
**Terrestrial Surveying & Mapping Co.**  
*"Your Friendly Neighborhood Surveyor"*  
 1127 Terry Ranch Road  
 Cheyenne, Wyoming 82007  
 Telephone Number: (307) 634-9360

This Corner Record was prepared by me or under my direction and supervision.

**SEAL & SIGNATURE**



RECORDED 6/19/2001 AT 11:52 AM REC# 297645 BK# 1596 PG# 982  
 DEBRA K. LATHROP, CLERK OF LARAMIE COUNTY, WY PAGE 1 OF 1

**GCDB Ref. 200140**

**Corner Name:** 1/4 **Section:** 31/32 **T.15 N. R.63 W. 6th P.M. Cross Index No. X ~ 5**